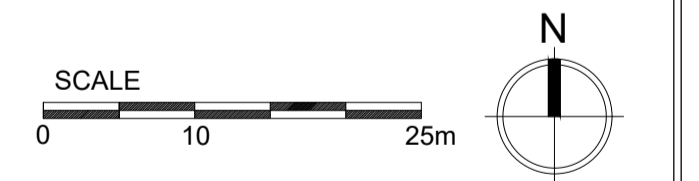




Disclaimer:
Subject to survey.

- Notes:
- EXTERNAL MATERIALS:**
- In-situ concrete with light brush finish(with painted white Lines)
 - Concrete paviments
 - Permeable concrete paviments
 - Soft Landscaping. Refer to Landscape Architects drawings for details and specification.
 - Gravel Margin
 - Bicycle Stands
 - Substation (Position TBC)

| | | | | |
|------|--------------|----------|------|------|
| A | Dims amended | 11.07.22 | CR | HA |
| - | First Issue | 11.07.22 | CR | HA |
| Rev: | Notes: | Date: | Dwn: | Iss: |



hale
ARCHITECTURE | DESIGN MANAGEMENT
22c Leathermarket Street, London, SE1 3HP

Project:
**Fitzherbert Road
Portsmouth**

Drawing Title:
Site Plan

| | | |
|-----------------------------|-------------------------|----------------|
| Project No: 16077 | Scale @ A1/A3: 1:500 | Revision: A |
| Drawing No: SK202 | | |