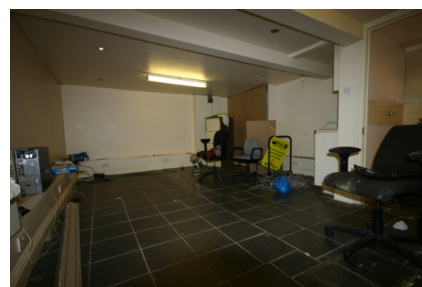


Mid terrace shop available on long lease. The property is situated in Roman Road market in busy trading position. Electric roller shutters, large basement. Previously trading as Western Union money exchange.



Roman Road , Bow
London , E3

Excellent Trading Location
Large Basement
Electric Roller Shutters
Long Lease Available

£14,000 Per Annum

Look Property Services (Bow)
349 Roman Road
Bow
London E3 5QR

Telephone
020 8981 9999
Fax
020 8981 0999
Email

lettings-e3@lookproperty.co.uk

Roman Road , Bow E3

SITUATION

Located on Roman Road this mid terrace shop is placed in a busy trading location inside Roman Road (market end).

DESCRIPTION

Mid terrace shop available on long lease. The property is situated in Roman Road market in busy trading position. Electric roller shutters, large basement. Previously trading as Western Union money exchange.

TENURE

Full Repair & Insure

GENERAL INFORMATION

LOCAL AUTHORITY

London borough of Tower Hamlets

VIEWING

Strictly by appointment with Look Property Services. Prior to making an appointment to view we strongly recommend that you discuss any particular points which are likely to affect your interest in the property with a member of staff who has seen the property in order that you do not make a wasted journey.

IMPORTANT NOTICE

Look Property Services, their clients and any joint agents give notice that:

1. They have no authority to make or give any representations or warranties in relation to the property. These particulars do not form part of any offer or contract and must not be relied upon as statements or representations of fact.

2. Any areas, measurements or distances are approximate. The text, photographs and plans are for guidance only and are not necessarily comprehensive. It should not be assumed that the property has all necessary planning, building regulation or other consents and Look Property Services have not tested any services, equipment or facilities. Purchasers must satisfy themselves by inspection or otherwise.

AWAITING EPC RESULTS

